

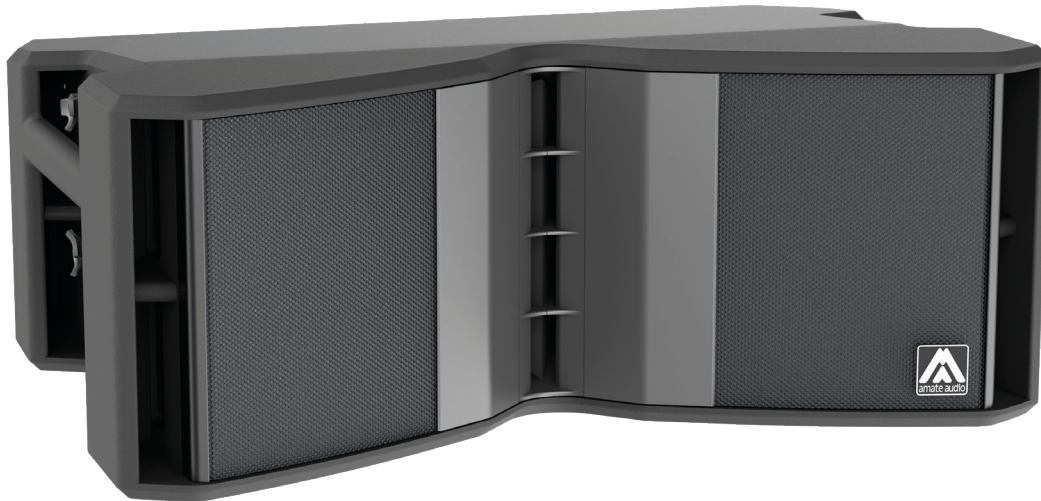
# XA211

2x 10" TWO-WAY SELF-POWERED  
LINE ARRAY SPEAKER SYSTEM

XCELLENCE



Dante™  
Act+ve



The latest advanced design and technology from the Xcellence series is a relentless pursuit of sonic excellence, leading us to optimize every component and material. At the core of the XA211, audio innovation ensures unparalleled clarity, accuracy and fidelity, allowing to shape and sculpt the audio to utmost precision.

## KEY FEATURES

### TRANSDUCER TECHNOLOGY

Two-way full-range active line array speaker system composed by two direct radiating 2.5-inch voice coil, neodymium magnet 10" loudspeakers mounted on two mid frequency phase plugs and a 3-inch voice coil, titanium diaphragm, neodymium magnet compression driver coupled to a 95° x 10° exclusive high performance waveguide.

### AMPLIFICATION

Onboard 3000 W 3rd generation Class D amplification.

Universal switch mode power supply (SMPS) with Power Factor Correction (PFC), allowing constant power delivery from 85 to 265 VAC input and high efficiency (>90%), with extremely compact lightweight form factor.

Exclusive and unique Overvoltage Protection which continuously monitors line voltage and instantly disconnects the system if the line voltage exceeds the maximum permissible level.

Automatic EcoMode low power consumption mode when no signal input present.

Connectors mounted on an inclined, recessed moulded connector plate for improved security and environmental protection.

Double PowerCon® connectors (input & link).

### ADVANCED DSP SYSTEM CONTROL

Onboard 64-bit precision DSP loudspeaker system control manages amplifier gain and cross-over settings, peak and thermal limiters and mutes. Includes adjustable 294 ms / 100 ms delay line for extensive alignment delay and 5-band fully configurable parametric EQ.

High-order FIR filtering ensures fully phase coherent PEQ adjustment and absolute phase alignment of common cabinet couplings.

Extensively R&D'd factory presets provide instantaneous system configuration for common applications.

Operation and monitoring of system parameters, presets and user-adjustments is via Amate Audio's unique rear-panel 3.5" TFT colour touchscreen GUI.

Automatic input overload prevention circuit: prevents overloading the A/D converter input.

Double Ethernet connection with integrated Ethernet switch and Dante™ audio networking protocol that uses standard IP networks to receive high-quality, uncompressed audio with near-zero latency.

New DSPstudio® control software capable of adjusting and setting-up even the finest details and monitoring key parameters of the amplifier: input and output levels, limiter engagement, amplifier temperature and status, and network connection status.

### DESIGN & ACCESSORIES

Recessed ergonomic carry handles.

Exclusive 1.5mm grey micro-foam cloth speaker grilles with optimum perforation gradient and aesthetic appearance.

Multilayer birch plywood cabinet with Polyurea® coating, providing maximum robustness and strength for touring, events production, venue installation and other highly demanding applications.

Several accessories allow easy flying and stacking.

Integrated stainless-steel rigging system.

# XA211

2x 10" TWO-WAY SELF-POWERED  
LINE ARRAY SPEAKER SYSTEM

XCELLENCE



**DSP STUDIO CONTROL**  
APP FOR WINDOWS AND  
MAC



**LIGHT NEODYMIUM**  
COMPONENTS



**EXCLUSIVE HIGH**  
PERFORMANCE  
WAVEGUIDE



**LOW FREQUENCY**  
PHASE PLUG



**> 250 V**  
OVERVOLTAGE  
PROTECTION



**INTEGRATED POWER &**  
CONTROL WITH MULTIPLE  
PRESETS



**REAR PANEL**  
TOUCHSCREEN GUI  
OPERATION



**HIGH RESISTANCE**  
POLYUREA® FINISH



**EASY INSTALLATION**  
ACCESSORIES

## TECHNICAL FEATURES

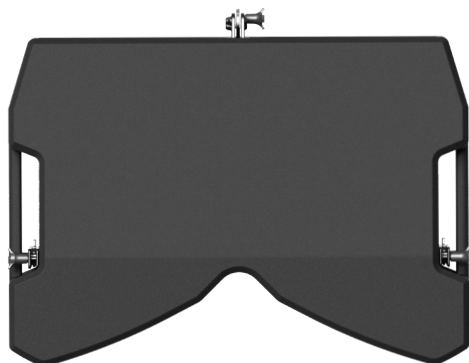
Amplifier (program power)	2500 W (LF) + 500 W (HF) Class D Bi-amplified
Analog input	Nominal: +8 dBu. Max: +20dBu. Impedance: 20 kΩ Balanced
Audio networking	Dante™ audio networking input, 1 channel, 48kHz
Mains	Universal Switch Mode Power Supply 85-265 V / 45-65 Hz
Average current draw	3.3 A (Heavy duty musical program)
SPL (1m)	136 dB musical program, 139 dB peak
Built-in DSP	64-bit processing unit. Includes factory presets
AD/DA converters	24 bit – 48 kHz
Standby mode consumption	8 W @230VAC
Adjustable delay line	294 ms / 100 m
Crossover frequency	800 Hz
Frequency Response (-10dB)	65 Hz – 19 kHz
Components	<div>LF-MF</div> <div>HF</div> <div>2x 10" neodymium woofers (2.5" voice coil)</div> <div>1x 3" titanium diaphragm, neodymium magnet compression driver</div>
Directivity (-6dB)	95° (H) x 10° (V)
Directivity factor (Q)	50
Directivity index (DI)	17 dB
Weight	35.1 Kg (XA211) / 32.5 Kg (XA211P)
Dimensions (HxWxD)	294 x 740 x 566 mm
Finish	Multilayer baltic birch plywood with high resistant black Polyurea® coating
Grille	1.5 mm powder coated steel with grey micro-foam cloth
Rigging	Stainless-steel black painted integrated rigging bars
Connectors	1x XLR input / 1x XLR link / 1x AC PowerCon® input / 1x AC PowerCon® link / 1 x EtherCon® RJ45 input / 1 x EtherCon® RJ45 link



SIDE VIEW



FRONTAL VIEW WITHOUT GRILLE



TOP VIEW



REAR VIEW

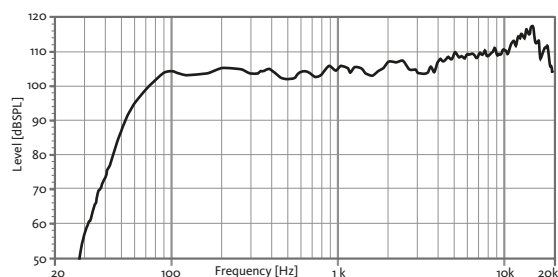
# XA211

## 2x 10" TWO-WAY SELF-POWERED LINE ARRAY SPEAKER SYSTEM

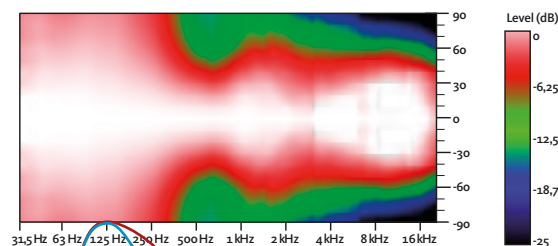
# XCELLENCE



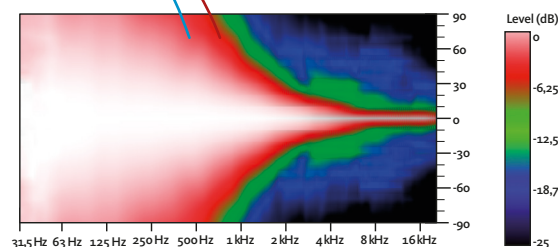
### FREQUENCY RESPONSE 1w/1m (FLAT PRESET)



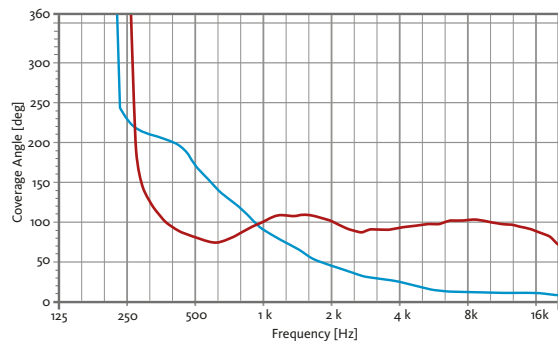
### HORIZONTAL COVERAGE



### VERTICAL COVERAGE

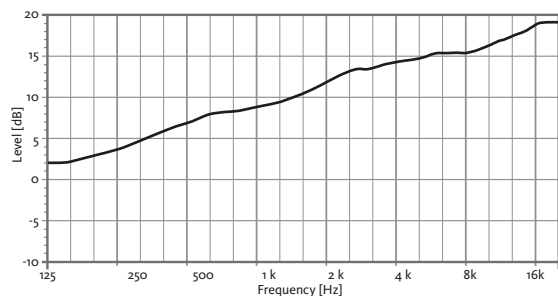


### HORIZONTAL & VERTICAL BEAMWIDTH (-6dB point)



HORIZONTAL VERTICAL

### DIRECTIVITY INDEX (DI)



### XA211 SET

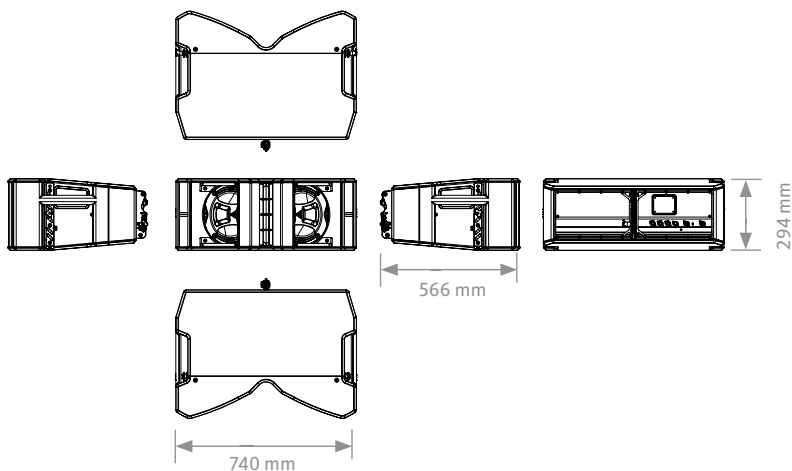
- 1x XA211 (active)
- 1x XA211P (passive)

XA211 ACTIVE MODEL



XA211P PASSIVE MODEL

### CAD DRAWING SCHEME



# XA211

2x 10" TWO-WAY SELF-POWERED  
LINE ARRAY SPEAKER SYSTEM

XCELLENCE



## ACCESSORIES

### FLIGHT CASE FC-XA211

For four units of XA211



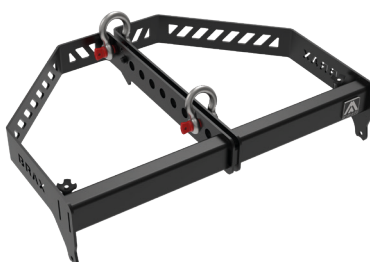
### STACKING FRAME STAX

For XA211 over XW118/XW218



### TOURING BUMPER BRAX

For flying XA211

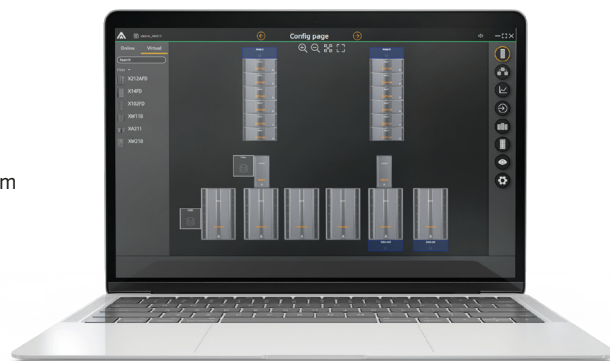


## DSP STUDIO 4 CONTROL SOFTWARE

The 4th generation of the DSPStudio software allows the remote control and monitoring of the device via Ethernet. Ready for both Windows and MacOS, and also touchscreen friendly, the software allows the control of several devices associated in arrays and groups. An offline mode is also available, so you can create your project without the need of a live connection with the devices.

Three different views are available:

- **Config Page:** add your devices in the desktop, assign names and organise them in arrays, groups and views.
- **Tuning Page:** ready to use when tuning the system. Assign individual or global gain, PEQ or delays to the devices, groups or arrays
- **Live Page:** Monitor constantly the status of the system. Limiters, temperature and mains voltage



PC  
VERSION



MAC  
VERSION

Download it from our website: [www.amateaudio.com](http://www.amateaudio.com)