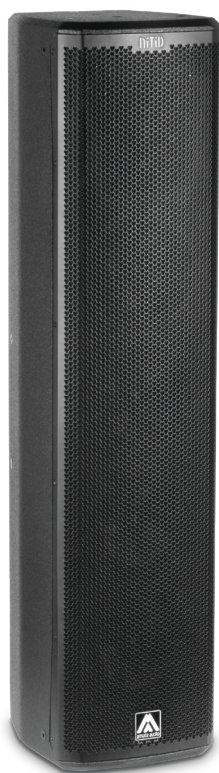


S46

4x 6" TWO-WAY ACTIVE FULL-RANGE
COLUMN SPEAKER SYSTEM

NiTiD-S



LIGHT NEODYMIUM
COMPONENTS



CARBON FIBER
CONE



ASYMMETRICAL
DISPERSION
HORN



REAR PANEL
TOUCHSCREEN GUI
OPERATION



INTEGRATED POWER &
CONTROL WITH MULTIPLE
PRESETS



HIGH RESISTANCE
POLYUREA®
FINISH



EASY RIGGING &
INSTALLATION ACCESSORIES

Full range, high-fidelity signal reproduction with exceptional LF response. The S46 provides high intelligibility, musicality and 127 dB continuous SPL, for unrivalled coverage in all kinds of large and medium auditoria and entertainment venues.

KEY FEATURES

TRANSDUCER TECHNOLOGY

Two-way, full range active loudspeaker system comprising four direct radiating 1.5-inch voice coil, neodymium magnet 6" loudspeakers and one 1.5-inch voice coil diameter, polymer diaphragm, neodymium magnet ring HF compression driver loaded to an asymmetrical rotational horn (50° to 100° x 55° dispersion).

AMPLIFICATION

Onboard 1000 W 3rd generation Class D bi-amplification.

Universal switch mode power supply (SMPS) with Power Factor Correction (PFC), allowing constant power delivery from 85 to 265 VAC input and high efficiency (>90%), with extremely compact lightweight form factor.

Automatic EcoMode low power consumption mode when no signal input present.

Connectors mounted on an inclined, recessed moulded connector plate for improved security and environmental protection.

Double PowerCon® connectors (input & link).

ADVANCED DSP SYSTEM CONTROL

Onboard 64-bit precision DSP loudspeaker system control manages amplifier gain and cross-over settings, peak and thermal limiters and mutes. Includes adjustable 294 ms / 100 m delay line for extensive alignment delay and 5-band fully configurable parametric EQ.

High order FIR filtering ensures fully phase coherent PEQ adjustment and absolute phase alignment of common cabinet coupling.

Extensive R&D'd factory presets provide instantaneous system configuration for common applications, including point-source PA, speech and subwoofer coupling.

ALC (Adaptive Loudness Compensation) improves the listening experience when the system is used at low volume levels.

Operation and monitoring of system parameters, presets and user adjustments is via Amate Audio's unique rear-panel 3.5" TFT colour touchscreen GUI. The front-panel NiTiD backlit logo can be switched on or off, or set to indicate system limiting.

DESIGN & ACCESSORIES

Recessed ergonomic carry handle for easy handling.

Exclusive 1.5mm black mesh speaker grille with optimum perforation gradient and attractive appearance.

Multilayer birch plywood cabinet with Polyurea® coating providing maximum robustness and strength for touring, events production, venue installation and other highly demanding applications.

M8 rigging points for easy flying.

35mm diameter pole mount socket mounted on the bottom side, for a standard tripod.

S46

4x 6" TWO-WAY ACTIVE FULL-RANGE
COLUMN SPEAKER SYSTEM

NiTiD-S



TECHNICAL FEATURES

Amplifier (program)	800 W (LF) + 200 W (HF) Class D Bi-amplified
Input Sensitivity	8 dBu – 1.94 V
Input Impedance	50 kΩ Balanced
Mains	Universal Switch Mode Power Supply 85-265 V / 45-65 Hz
Average current draw	1.7 A (Heavy duty musical program)
SPL (1 m)	127 dB musical program, 130 dB peak
Built-in DSP	64-bit processing unit. Includes factory presets
AD/DA converters	24 bit – 48 kHz
Standby mode consumption	3.7 W @230 VAC
Adjustable delay line	294 ms / 100 m
Crossover frequency	1k8 Hz
Frequency response (-10 dB)	50 Hz – 19 kHz
Components	<div> <div>LF - MF</div> <div>HF</div> </div> 4x 6" neodymium woofers with carbon fiber cone (1.5" voice coil) 1.5" polymer diaphragm, neodymium magnet ring driver
Directivity (-6dB)	50° to 100° (H) x 55° (V)
Directivity factor (Q)	12.6
Directivity Index (DI)	11 dB
Weight	20.9 kg
Dimensions (HxWxD)	1056 x 250 x 274 mm
Finish	Multilayer baltic birch plywood with high resistant black Polyurea® coating
Grille	1.5 mm powder coated steel with black acoustic mesh
Rigging	M8 points
Connectors	1x XLR input / 1x XLR link / 1x AC PowerCon® input / 1x AC PowerCon® link



Amate Audio's latest generation DSP System management is integrated with 3rd generation Class D amplification. Colour touchscreen operation and monitoring of DSP System includes access to powerful presets - engineered by Amate Audio R&D team – that instantly configure your NiTiD loudspeaker for the majority of common application environments within seconds, prior to rigging or installation.



TOP VIEW



BOTTOM VIEW



SIDE VIEW



FRONT VIEW



REAR VIEW

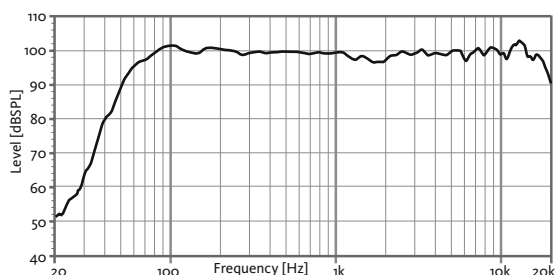
S46

4x 6" TWO-WAY ACTIVE FULL-RANGE
COLUMN SPEAKER SYSTEM

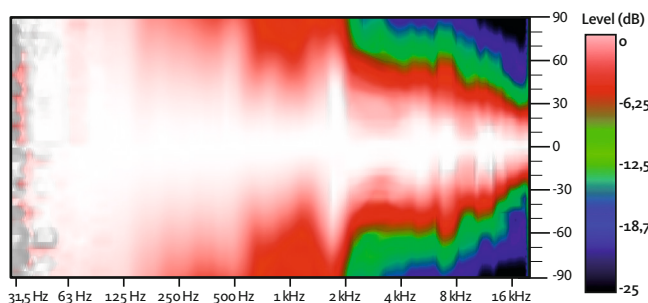
NiTiD-S



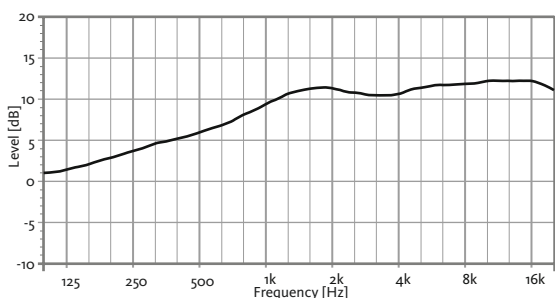
FREQUENCY RESPONSE 1W/1m (FLAT PRESET)



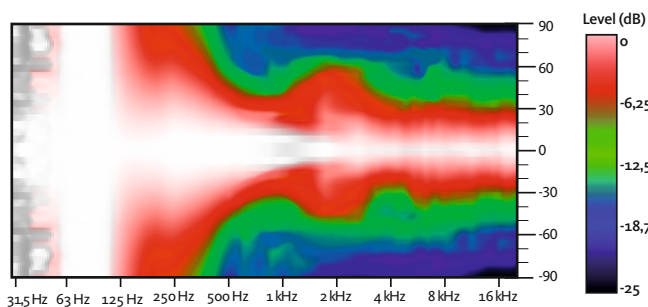
HORIZONTAL COVERAGE



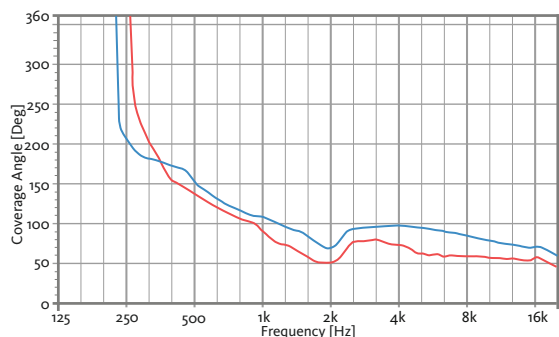
DIRECTIVITY INDEX (DI)



VERTICAL COVERAGE

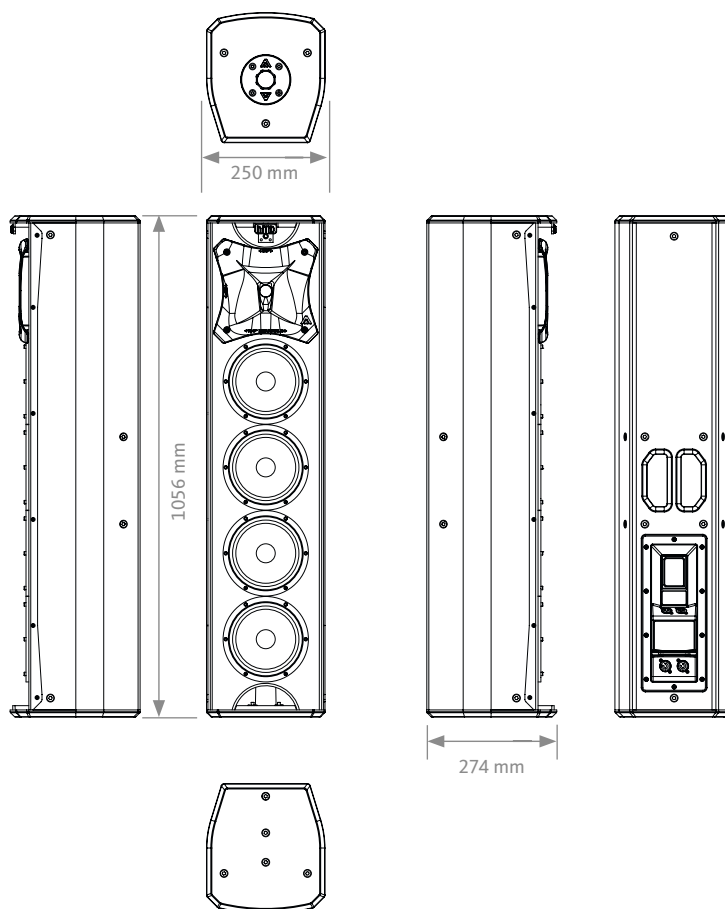


HORIZONTAL & VERTICAL BEAMWIDTH (-6dB point)

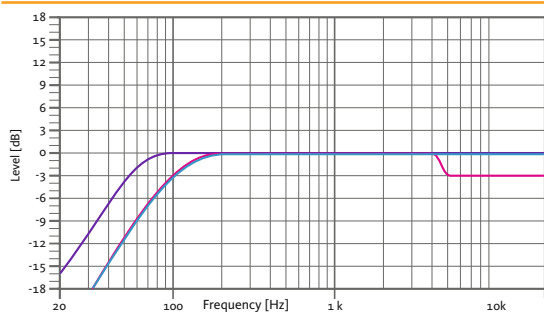


HORIZONTAL VERTICAL

CAD DRAWING SCHEME



BUILT-IN PRESETS



FLAT
Flat response
SPEECH
Vocal use

HPF90
HPF 90 Hz

S46

4x 6" TWO-WAY ACTIVE FULL-RANGE
COLUMN SPEAKER SYSTEM

Nítid-S



ACCESSORIES

TRANSPORT COVER
NC-S46



WALL MOUNT BRACKET
SP-46N



WALL-MOUNT BRACKET
SP-WHR



FLYING BAR
RB-S



SAFETY SLING
SC-15



M8 RIGGING EYEBOLT
ACR-M8



FLYING BAR WITH HOOK
RB-S/GT

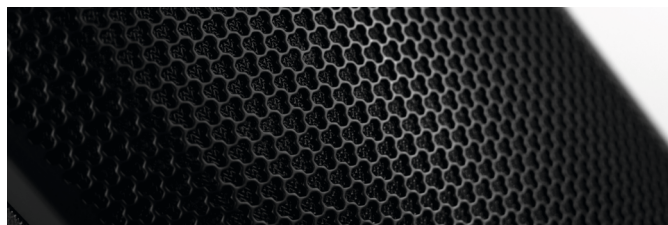


TELESCOPIC DISTANCE ROD
SP-CRTL

ø: 35 mm
Length: 55 cm ~ 90 cm
Thread: M20



DISCOVER NÍTID



UNIQUE DESIGN

New S-series models build on the success, innovation and best-in-class performance of the original Nítid designs with improved features including a recessed moulded connector plate, more highly stylised form factor and improved robustness of the world's most acoustically transparent pro-audio speaker grille.

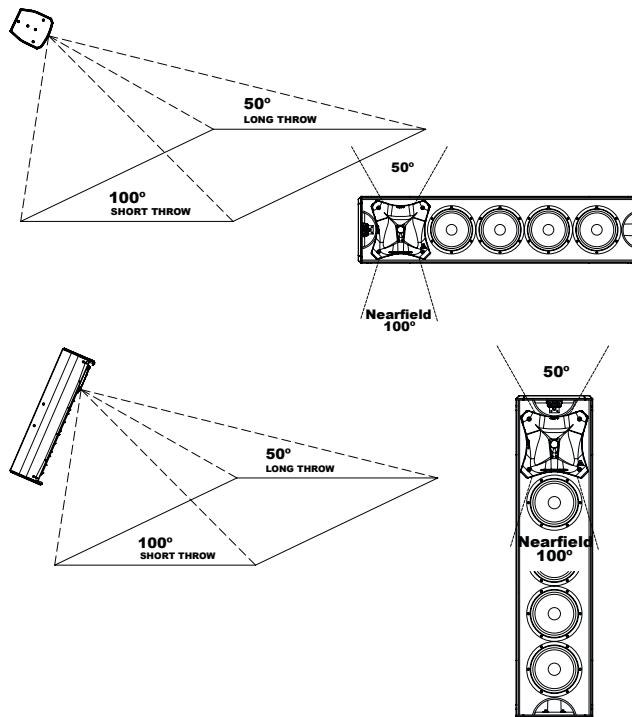


THE PERFECT BALANCE

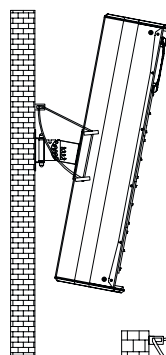
An ongoing programme of research and development ensures that Nítid series loudspeakers continue to achieve the highest levels of output and performance from the most compact sized designs, in an unrivalled synthesis of engineering and aesthetic form.

ASYMMETRICAL DISPERSION HORN

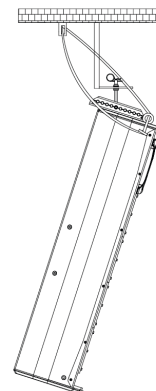
It allows to optimize the coverage depending on its position.



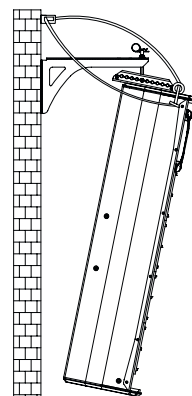
VERTICAL WALL-MOUNT
SP-46N + SC-15



VERTICAL COLUMN-MOUNT
RB-S + SC-15



VERTICAL WALL-MOUNT
SP-WHR + SC-15



VERTICAL TRUSS-MOUNT
RB-S/GT + SC-15

