

SPECIAL FOR KTV
ENTERTAINMENT



ASYMMETRICAL
HORN



HIGH RESISTANCE
POLYUREA® PAINT

The most compact karaoke system. Small sized, it keeps a high performance making it the most versatile solution.

KEY FEATURES

TRANSDUCERS TECHNOLOGY

Two-way full range passive speaker system composed by one direct radiating 2.5-inch voice coil, 10" loudspeaker and one 1.4-inch voice coil diameter, PETP diaphragm compression driver loaded to an asymmetrical rotational horn (50° to 100° x 55° dispersion).

POWER & CONTROL

700 W continuous power in musical program.

An accurate internal passive crossover achieves an optimum performance while including a protection on high frequency driver.

Connectors are placed on an inclined plane to effectively protect them against rain or moisture.

Double Speakon (input & link)

DESIGN & ACCESSORIES

2mm speaker grille with black mesh, exclusively designed with an optimum perforation gradient and attractive appearance.

Multilayer birch plywood cabinet with Polyurea® coating, offering maximum reliability and strength for touring as well as for high demanding applications.

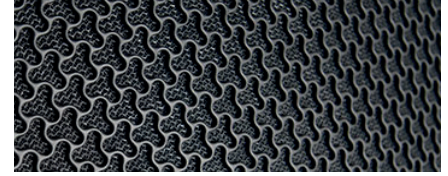
M8 rigging points for easy flying.

M8 socket mounted on the bottom side.

TECHNICAL FEATURES

Power (musical program)	700 W
Power (r.m.s)	350 W
Nominal Impedance	8 Ω
SPL(1W/1m)	96 dB
Maximum SPL (continuous/1m)	124 dB
Maximum SPL (peak/1m)	127 dB
Crossover frequency	2k5 Hz
Frequency Response (-10dB)	74 Hz - 20 kHz
Components	LF-MF HF
	10" woofer (2.5" voice coil) 1.4 PETP diaphragm compression driver
Directivity (H x V)	50° to 100° x 55°
Directivity factor (Q)	12.6
Directivity Index (DI)	11 dB
Weight	18.7 Kg
Finish	Multilayer birch plywood with high resistant black Polyurea® coating
Dimensions (H x W x D)	570 x 340 x 365 mm
Grille	2 mm steel with black acoustic mesh
Rigging	M8 points
Connectors	1x Speakon input / 1x Speakon link

DISCOVER NÍTiD



UNIQUE DESIGN

Distinguishing details include the speaker grille, exclusively designed for an attractive appearance, maximum protection, and with **the best performance coefficient in the market, for improved sound quality.** The Polyurea® finish offers durable protection for the birch-ply cabinet. A wide range of accessories is provided for whatever your application is.



THE PERFECT BALANCE

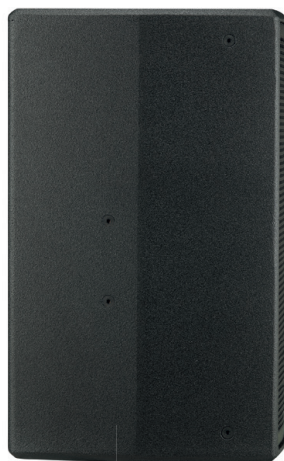
NÍTiD series is the culmination of an intensive program of research, development and optimization, to achieve the greatest possible power and performance from the most compact sized cabinet. Every aspect of its form factor has resulted from examination and consideration of optimum acoustic response, ergonomics, construction and appearance.



TOP VIEW



BOTTOM VIEW



SIDE VIEW

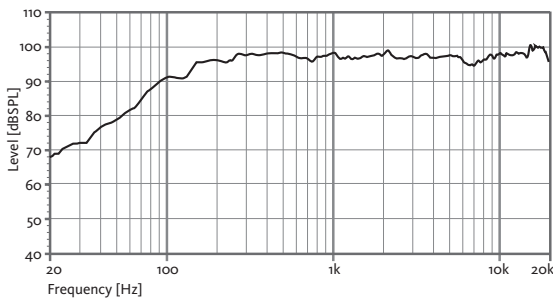


FRONT VIEW

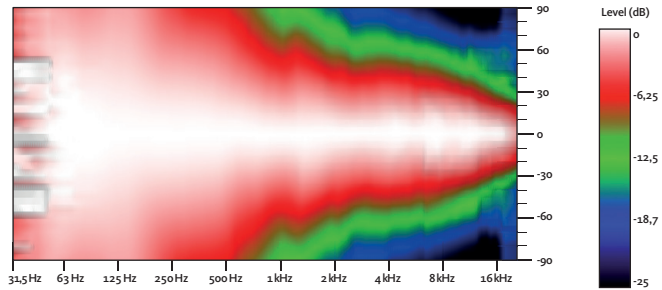


REAR VIEW

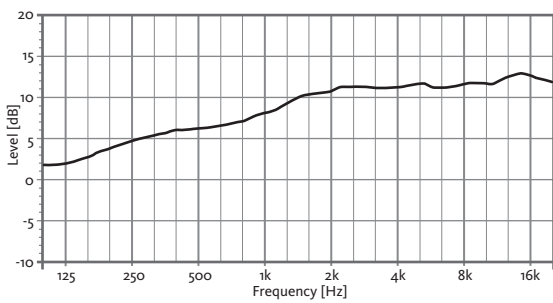
FREQUENCY RESPONSE 1W/1m



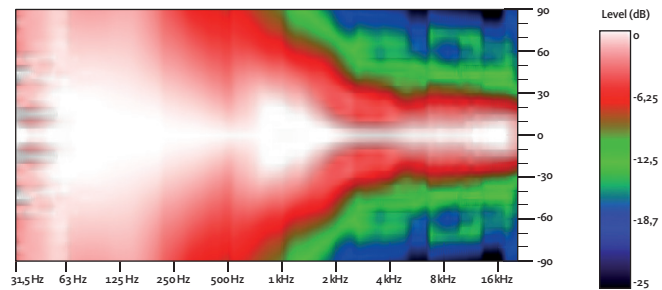
HORIZONTAL COVERAGE



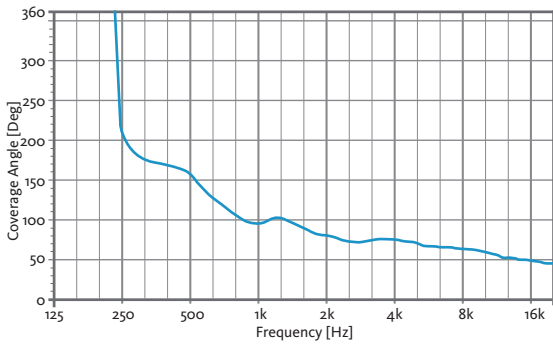
DIRECTIVITY INDEX (DI)



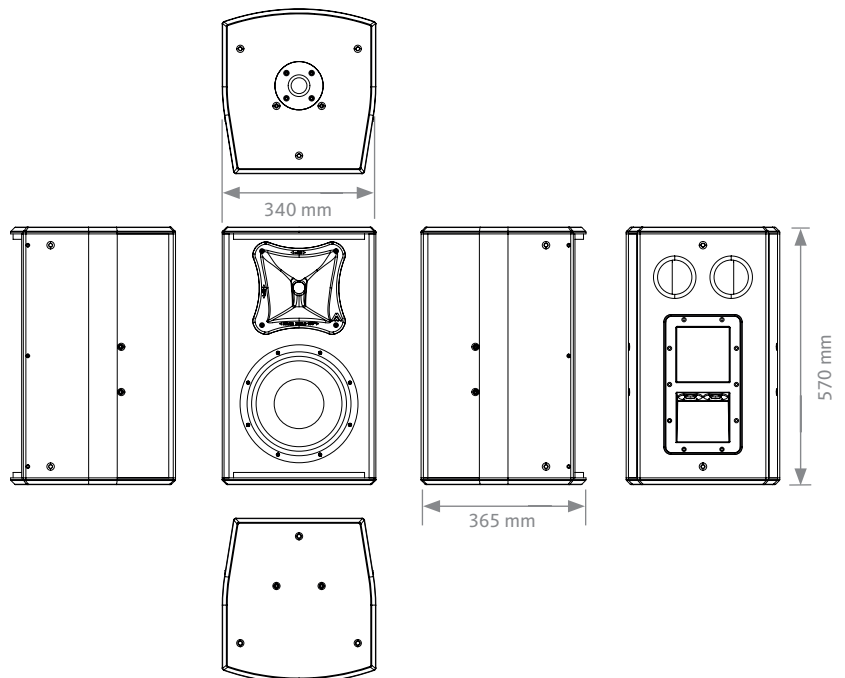
VERTICAL COVERAGE



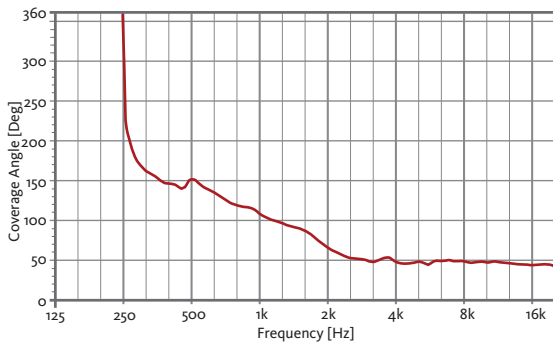
HORIZONTAL BEAMWIDTH (-6dB point)



CAD DRAWING SCHEME



VERTICAL BEAMWIDTH (-6dB point)



ASYMMETRICAL DISPERSION HORN

It allows to optimize the coverage depending on its position.

