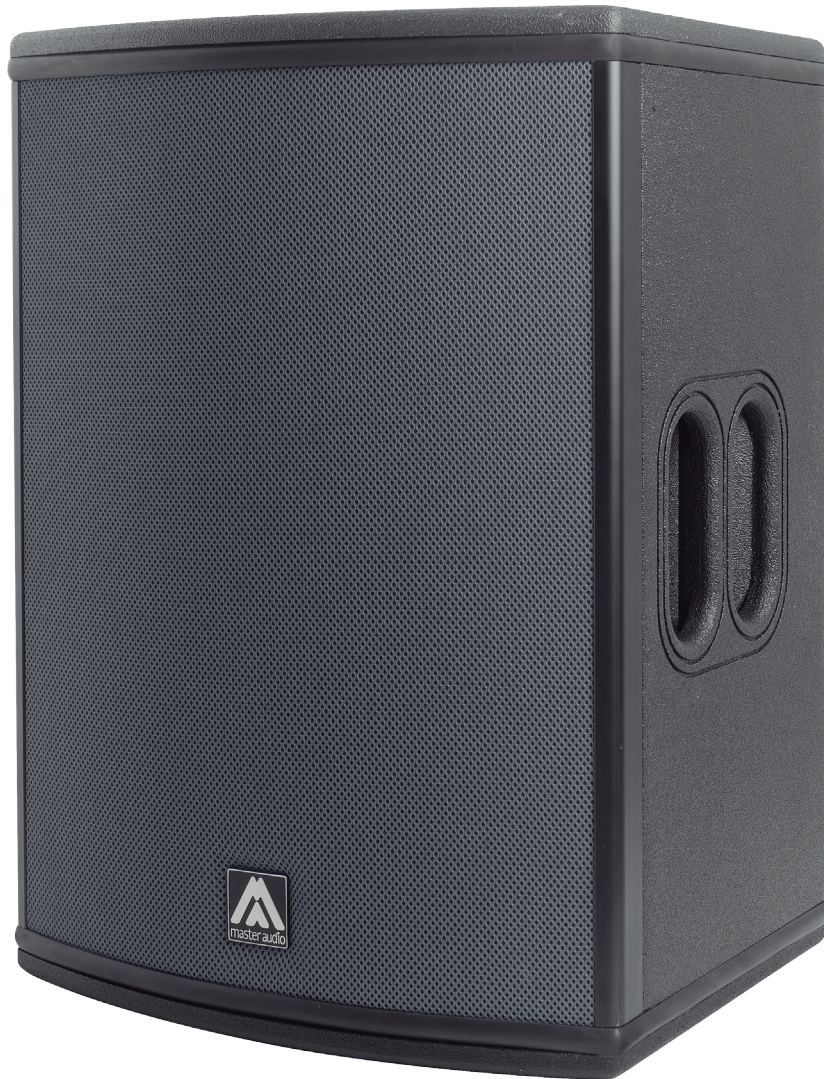


X12CE

POINT SOURCE
12" COAXIAL ACTIVE
SPEAKER SYSTEM

Xcellence



Small format but impeccable sound! There is no better combination of performance, power, weight and size. Weighing only 22.3 kg, X12CE is the most versatile and dynamic system on the market. X12CE can handle the most demanding stage monitor and PA applications with excellent results.

¡Sonido impecable en un pequeño formato! No existe mejor combinación de rendimiento, potencia, peso y tamaño. Con tan sólo 22,3 kg, la X12CE es el sistema más dinámico y versátil del mercado. X12CE responde a las más exigentes aplicaciones como monitor de escenario o PA con resultados excelentes.

X12CE

POINT SOURCE 12" COAXIAL ACTIVE SPEAKER SYSTEM

Xcellence



COAXIAL
SPEAKER



> 250 V
Overvoltage
Protection



WITH CWK-D

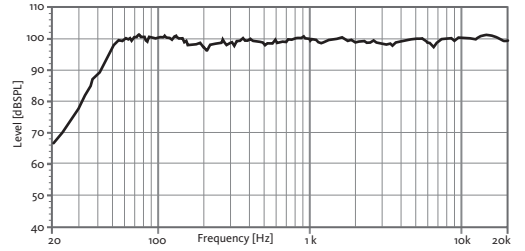


DSP STUDIO CONTROL APP
FOR IPAD & WINDOWS

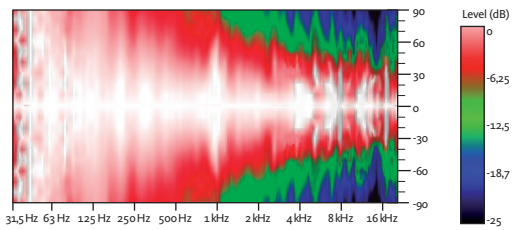
TECHNICAL FEATURES

Amplifier (program power)	800 W (LF) + 200 W (HF) – Class D Bi-amplified
Input sensitivity	8 dBu – 1.94 V
Input Impedance	20 kΩ Balanced
Mains	Universal Switch Mode Power Supply 85-265 V / 45-65 Hz
Average current draw	1.3 A (Heavy duty musical program)
SPL (1 m)	127 dB continuous, 130 dB Peak
Built-in DSP	48 bit
AD/DA converters	24 bit – 96 kHz
Presets	FACTORY / NEARFIELD / SPEECH / MONITOR / XOVER + 23 configurable user memories
Frequency response (-10 dB)	48 Hz – 20 kHz
Components	Coaxial transducer LF 12" Neodymium woofer (3" voice coil) HF 3" Titanium diaphragm Neodymium driver
Directivity (HxV)	80° Conical
Weight	22.3 kg
Finish	Multilayer Baltic birch plywood Front steel grille with grey micro-foam cloth High resistant black matt Polyurea paint

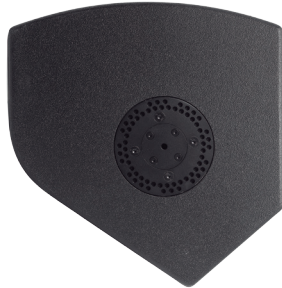
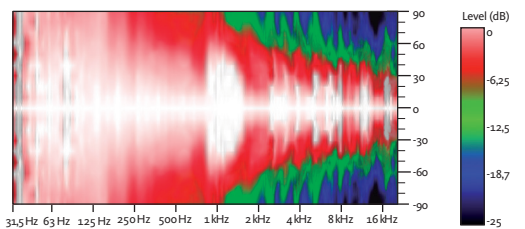
FREQUENCY RESPONSE 1w/1m (FACTORY PRESET)



HORIZONTAL COVERAGE, 0°



VERTICAL COVERAGE, 0°



STAGE MONITOR APPLICATION



REAR VIEW

ACCESSORIES



FC-X12CE



UB-X12



GT-50



SC-15X



ACR-M10



SP/CR



CWK-D