



LIGHT  
NEODYMIUM  
COMPONENTS



ASYMMETRICAL  
DISPERSION  
HORN



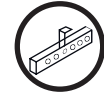
VERSATILE SYSTEM  
MAIN PA &  
STAGE MONITOR



MULTIPLE  
PRESETS  
AVAILABLE



HIGH RESISTANCE  
POLYUREA®  
PAINT



ACCESSORIES  
FOR EASY  
INSTALLATIONS

The perfect compromise for any application.  
Main PA or stage monitoring! Superb vocal articulation, great low-end and crystal  
clear high frequencies give N12 a unique balance in its class.

## KEY FEATURES

### TRANSDUCERS TECHNOLOGY

Two-way full range active speaker system composed by one direct radiating 3-inch voice coil, neodymium magnet 12" loudspeaker and one 1,75-inch voice coil diameter, PETP diaphragm neodymium magnet compression driver loaded to an asymmetrical rotational horn (50° to 100° x 55° dispersion).

### AMPLIFICATION

700 W 3rd generation Class D built-in amplifier controlled by a dedicated DSP.

90% efficiency amplifier SMPS (switching mode power supply), allowing maximum power delivery with minimum consumption in an extremely low-weight and reduced size.

Rear connections and control panel with LCD screen to display the different settings, presets, volume and adjustments done by the user. Our SensitiveTouch® capacitive sensor keypad guarantees the reliability of the system even under humidity and extreme weather conditions.

Connectors are placed on an inclined plane to effectively protect them against rain or moisture.

Double PowerCon® (input & link).

### DSP & CONTROL

Internal DSP with all necessary signal processing (crossovers, EQ's, delay, limiter, gain control, mute, input dynamic compressor) as well as several useful presets to adjust N12 to different requirements.

The on-screen output power display and the front NITID backlight help to easy monitor the system. The backlight can be switched on or off, or set to indicate when the system is limiting.

ALC (Adaptative Loudness Compensation) to improve the listening experience when the cabinet is used at low musical levels.

ECO Mode available.

5-band EQ menu with five parametric equalizers.

### DESIGN & ACCESSORIES

Ergonomic handles for an easy handling.

Trapezoidal shape for PA or stage monitor application.

2mm speaker grille with black mesh, exclusively designed with an optimum perforation gradient and attractive appearance.

Multilayer birch plywood cabinet with Polyurea® coating, offering maximum reliability and strength for touring as well as for high demanding applications.

M8 rigging points for easy flying.

35mm diameter pole mount socket mounted on the bottom side, for a standard tripod.

Protective rubber profiles.

## TECHNICAL FEATURES

Amplifier (program)	600 W (LF) + 100 W (HF) Class D Bi-amplified				
Input Sensitivity	8 dBu – 1.94 V				
Input Impedance	20 k $\Omega$ Balanced				
Maximum input level	20 dBu				
Mains	Universal Switch Mode Power Supply 85-265 V / 45-65 Hz				
Average current draw	0.7 A (Heavy duty musical program)				
SPL (1 m)	127 dB continuous musical program, 130 dB peak				
Built-in DSP	48-bit processing unit. Includes factory presets				
AD/DA converters	24 bit – 48 kHz				
Standby mode consumption	< 5 W				
Adjustable delay line	118 ms / 40 m				
Crossover frequency	2k Hz				
Frequency response (-10 dB)	52 Hz – 19 kHz				
Components	<table border="0"> <tr> <td>LF - MF</td> <td>12" neodymium woofer (3" voice coil)</td> </tr> <tr> <td>HF</td> <td>1.75" PETP diaphragm neodymium magnet compression driver</td> </tr> </table>	LF - MF	12" neodymium woofer (3" voice coil)	HF	1.75" PETP diaphragm neodymium magnet compression driver
LF - MF	12" neodymium woofer (3" voice coil)				
HF	1.75" PETP diaphragm neodymium magnet compression driver				
Directivity (HxV)	50° to 100° x 55°				
Directivity factor (Q)	12.6				
Directivity Index (DI)	11 dB				
Weight	19.3 kg				
Dimensions (HxWxD)	623 x 360 x 390 mm				
Finish	Multilayer birch plywood with high resistant black Polyurea® coating and protective rubber profiles				
Grille	2 mm steel with black acoustic mesh				
Rigging	M8 points				
Connectors	1x XLR input / 1x XLR link / 1x AC PowerCon® input / 1x AC PowerCon® link				



## CONTROL PANEL

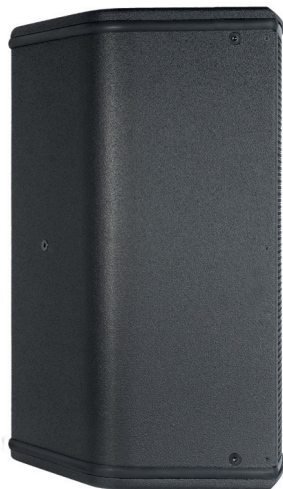
Our latest digital signal processing (DSP) is integrated with 3rd generation Class D amplification and operated via our dedicated SensitiveTouch™ keypad technology. With no mechanical components or moving parts, the SensitiveTouch™ capacitive sensor keypad is highly responsive, weatherproof and durable compared with conventional electronic controls and effectively failsafe. With the SensitiveTouch™ keypad and display, you can set-up the N12 in just seconds.



TOP VIEW



BOTTOM VIEW



SIDE VIEW

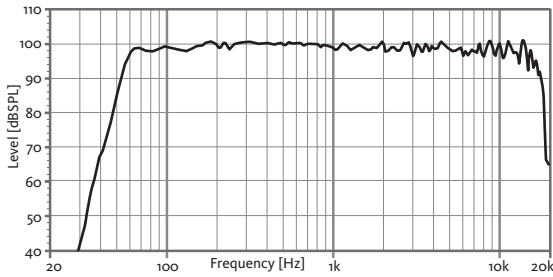


FRONT VIEW

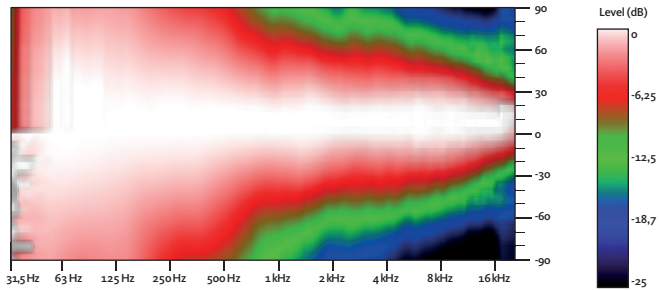


REAR VIEW

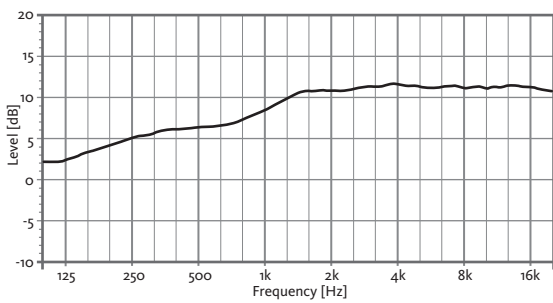
### FREQUENCY RESPONSE 1w/1m (FLAT PRESET)



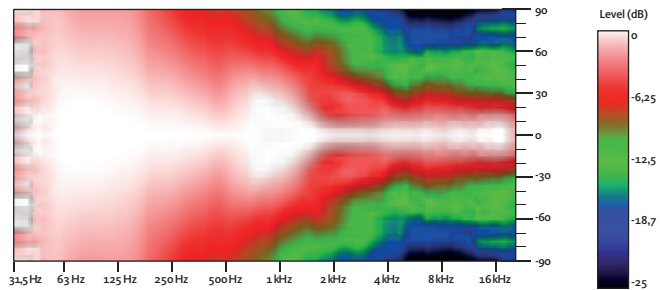
### HORIZONTAL COVERAGE



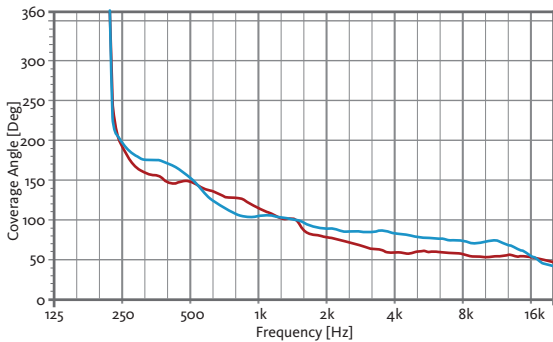
### DIRECTIVITY INDEX (DI)



### VERTICAL COVERAGE

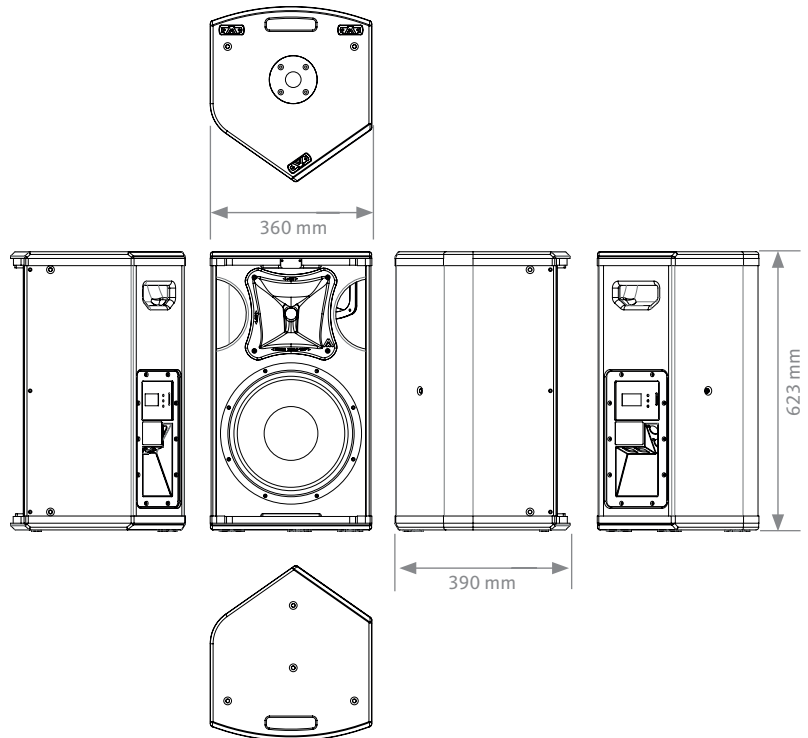


### HORIZONTAL & VERTICAL BEAMWIDTH (-6dB point)

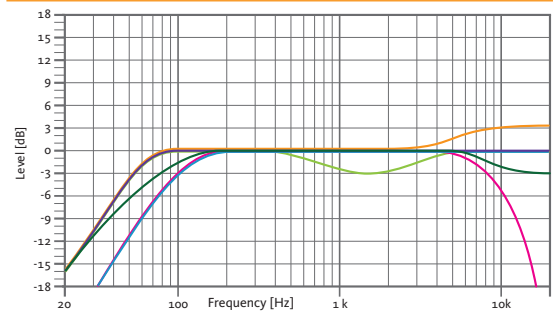


HORIZONTAL VERTICAL

### CAD DRAWING SCHEME



### BUILT-IN PRESETS



**FLAT**

Flat response

**NEARFIELD**

-3 dB mid frequencies (400 Hz - 4 kHz)

**LONGTHROW**

+3 dB high frequencies

**SPEECH**

HPF 100 Hz

LPF 8 kHz

**MONITOR**

Stage monitor use

**XOVER**

HPF 100 Hz

### ACCESSORIES

#### FLIGHT CASE

FC-N12

for two units of N12



#### WALL MOUNT BRACKET

UB-L



#### FLYING BAR

HR-S



#### FLYING BAR WITH HOOK

HR-S/GT



#### M8 RIGGING EYEBOLT

ACR-M8



#### TELESCOPIC DISTANCE ROD

SP-CRTL

ø: 35 mm  
Length:  
55 cm ~ 90 cm  
Thread: M20



#### SAFETY SLING

SC-15



### DISCOVER NÍTID

#### UNIQUE DESIGN

Distinguishing details include the speaker grille, exclusively designed for an attractive appearance, maximum protection, and with **the best performance coefficient in the market, for improved sound quality.** The Polyurea® finish offers durable protection for the birch-ply cabinet, and electronic circuits and controls are smartly protected against moisture. A wide range of accessories is provided for whatever your application is.



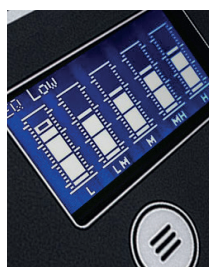
#### THE PERFECT BALANCE

NÍTID series is the culmination of an intensive program of research, development and optimization, to achieve the greatest possible power and performance from the most compact sized cabinet. Every aspect of its form factor has resulted from examination and consideration of optimum acoustic response, ergonomics, construction and appearance.



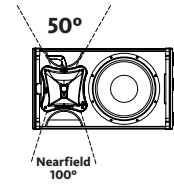
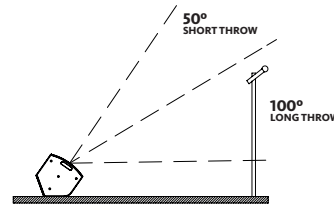
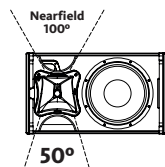
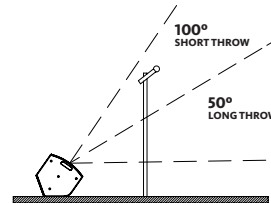
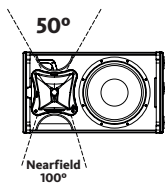
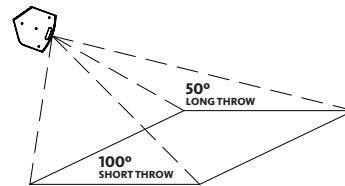
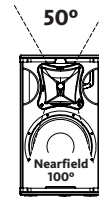
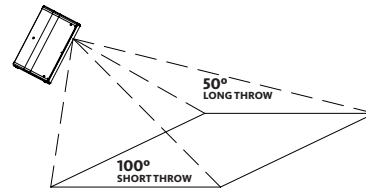
#### AMAZING PERFORMANCE

The integrated 'plug & play' active power and control system includes DSP presets for rapid setup and amazing sound, and the comprehensive control interface includes instantly recallable presets for setting up the NÍTID in just a few seconds. The accurate match between transducers, DSP and amplifiers provide a fully optimized system for the most demanding applications.

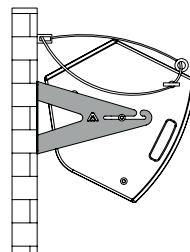


### ASYMMETRICAL DISPERSION HORN

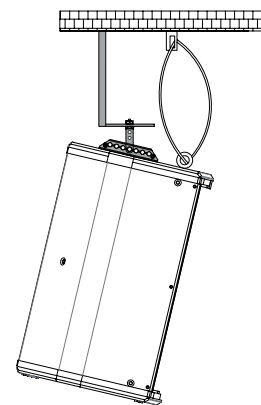
It allows to optimize the coverage depending on its position.



#### HORIZONTAL WALL-MOUNT UB-L + SC-15



#### VERTICAL COLUMN-MOUNT HR-S + SC-15



#### VERTICAL TRUSS-MOUNT HR-S/GT + SC-15

