

JOKER

JK18W1

18" 1000W
SUBWOOFER

Joker



JK18W1

Get ready to be surprised!
A smart subwoofer design with 1000 W power handling
will tune you in with the music.



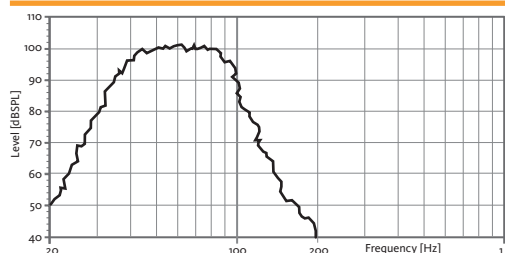
Horn loaded
BAND PASS
design

TECHNICAL FEATURES

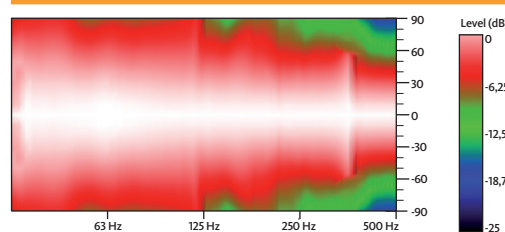
Power (musical program)	1000 W
Nominal Impedance	8 Ω
SPL (1 m)	98 dB (1 W), 128 dB continuous 131 dB peak
Frequency response (-10 dB)	34 Hz – 190 Hz*
Components LF	18" woofer (4" voice coil)
Directivity (HxV)	omnidirectional
Dimensions (HxWxD)	552 x 740 x 710 mm
Weight	48.9 kg
Finish	Multilayer plywood 1.5 mm optimized steel grille with foam High resistant bi-component black Polyurea® coating

*LPF-12: LPF Xover 12 dB/oct available for passive-parallel use.

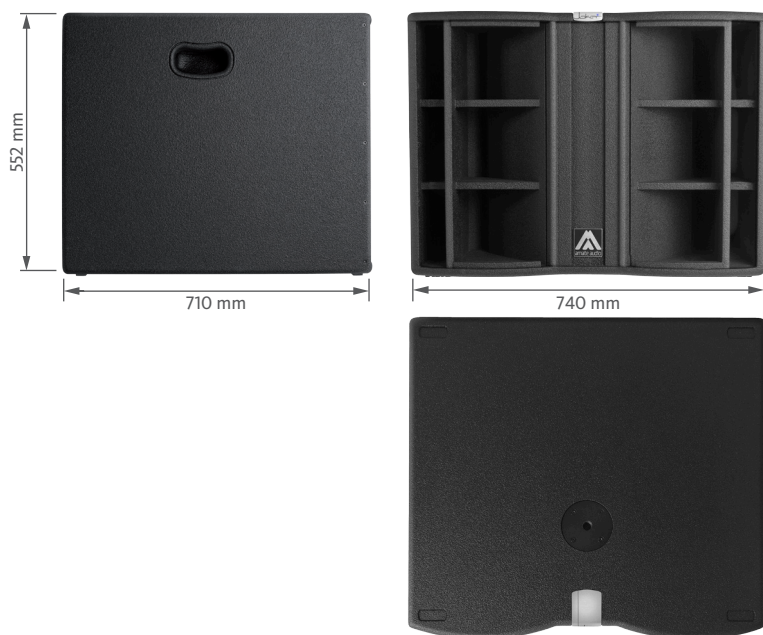
FREQUENCY RESPONSE 1W/1m (LPF100+3 PRESET)**



HORIZONTAL & VERTICAL COVERAGE

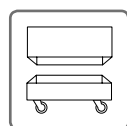


**With an external Amate Audio DSP

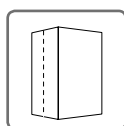


REAR VIEW

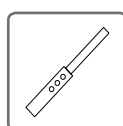
ACCESSORIES



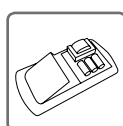
FC-JK18W



NC-JK18W



SP/CRTL



LPF-12