

# JK15

15" TWO-WAY  
SPEAKER SYSTEM

Joker



**Surprising definition meets power!  
A polyvalent 15" system with accurately designed components,  
raising its performance to the maximum level.**

¡Potencia con una definición sorprendente!  
La polivalencia de un sistema de 15" utilizando componentes cuidadosamente  
diseñados para elevar las prestaciones al máximo exponente.

# JK15 15" TWO-WAY SPEAKER SYSTEM



Asymmetrical dispersion horn

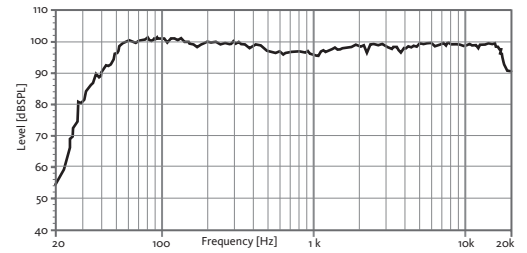


High resistant Polyurea® Paint

## TECHNICAL FEATURES JK15 PASSIVE

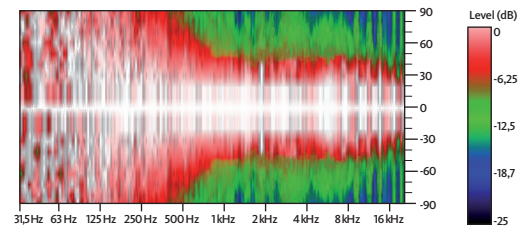
Power (musical program)	800 W
Nominal Impedance	8 Ω
SPL (1 m)	99 dB (1 W), 128 dB continuous 131 dB peak
Frequency response (-10 dB)	45 Hz - 19 kHz
Components	LF-MF 15" woofer (3" voice coil) HF 1.75" PETP diaphragm Neodymium driver
Directivity (HxV)	50° to 100° x 55°
Weight	26.2 kg
Finish	Multilayer plywood Optimized front steel grille with foam High resistant bi-component black Polyurea coating

### FREQUENCY RESPONSE 1W/1m (FLAT PRESET)

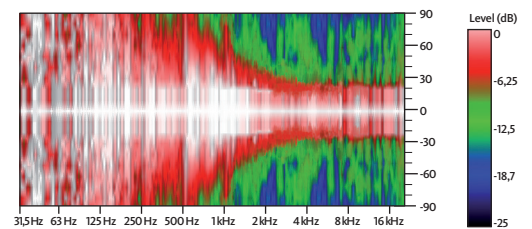


\* With external Master Audio DSP

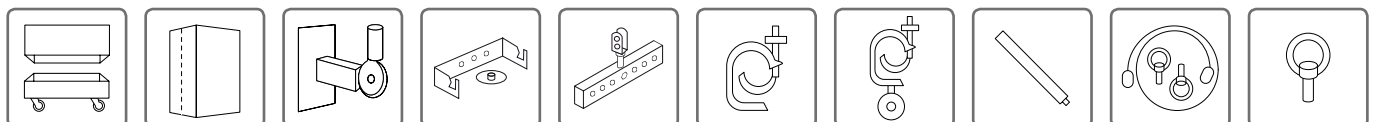
### HORIZONTAL COVERAGE, 0°



### VERTICAL COVERAGE, 0°



## ACCESSORIES



FC-JK15 NC-JK15 SP-35 SP-15 HR-1215 GT-50 GT-50HR SP/CR SC-15 ACR-M8