



Your swiss-army knife!
Versatile design, double function: main PA or stage monitor.
700 W coaxial active point source.

¡Tu herramienta multifunción!
Diseño versátil, doble funcionalidad: PA principal o monitor de escenario.
700 W en un sistema point source coaxial activo.

JK10MA

10" COAXIAL ACTIVE
MAIN PA /
STAGE MONITOR



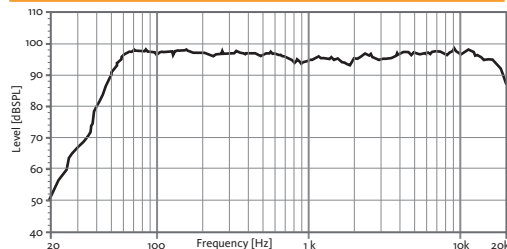
-  Versatile system
MAIN PA &
STAGE MONITOR
-  Coaxial
speaker
-  Multiple
PRESETS
available
-  High resistant
Polyurea® Paint

TECHNICAL FEATURES

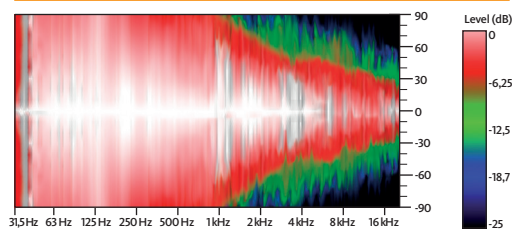
JK10MA ACTIVE

Amplifier (program power)	600 + 100 W Class D Bi-amplified
Input sensitivity	8 dBu – 1.94 V
Input Impedance	20 kΩ Balanced
Maximum input level	20 dBu
Mains	Universal Switching Power Supply 85-265 V/45-65 Hz
Average current draw	0.7 A (Heavy duty musical program)
SPL (1 m)	124 dB continuous, 127 dB peak
Built-in DSP	48 bit (including 7 factory presets)
AD/DA converters	24 bit – 48 kHz
Standby mode consumption	< 5 W
Adjustable Delay line	118 ms / 40 m
Frequency response (-10 dB)	50 Hz – 18 kHz
Components	Coaxial transducer LF-MF HF
	10" Coaxial woofer (2.5" voice coil) 1.75" Polyester diaphragm driver
Directivity (HxV)	70° x 70°
Weight	15.2 kg
Finish	Multilayer plywood Optimized front steel grille with foam High resistant bi-component black Polyurea coating

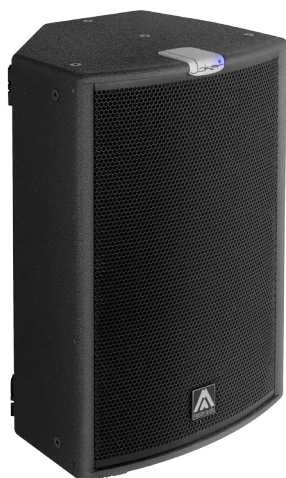
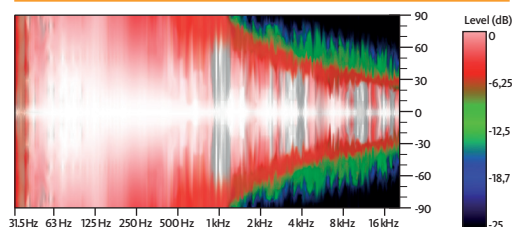
FREQUENCY RESPONSE 1W/1m (FLAT PRESET)



HORIZONTAL COVERAGE, 0°



VERTICAL COVERAGE, 0°



PA APPLICATION



REAR VIEW

ACCESSORIES



FC-JK10MA

SP-35

SP-10

HR-1215

GT-50

GT-50HR

SP/CR

SC-15

ACR-M8