

**Outstanding size to power ratio.
700 W in a reduced 10" format tears down any excuse
to obtain a "big" sound in a reduced size.**

Excepcional relación tamaño-potencia.
700 W en un formato de tan solo 10", ya no hay excusa;
el tamaño no es un impedimento para tener un sonido "a lo grande".

JK10A

10" TWO-WAY ACTIVE SPEAKER SYSTEM



Asymmetrical dispersion horn



Light neodymium components



Multiple PRESETS available

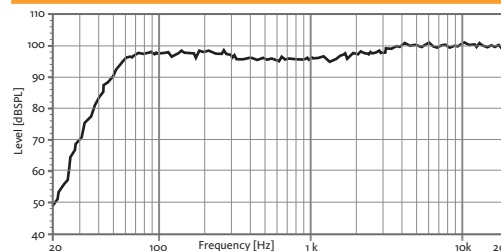


High resistant Polyurea® Paint

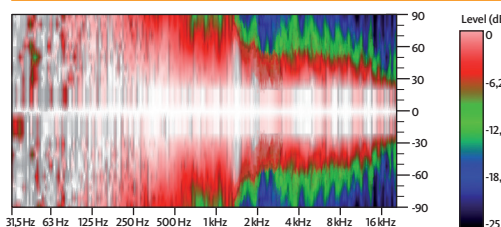
TECHNICAL FEATURES JK10A ACTIVE

Amplifier (program power)	600 + 100 W Class D Bi-amplified
Input sensitivity	8 dBu - 1.94 V
Input Impedance	20 kΩ Balanced
Maximum input level	20 dBu
Mains	Universal Switching Power Supply 85-265 V/45-65 Hz
Average current draw	0.7 A (Heavy duty musical program)
SPL (1 m)	125 dB continuous 128 dB peak
Built-in DSP	48 bit (including 7 factory presets)
AD/DA converters	24 bit - 48 kHz
Standby mode consumption	< 5 W
Adjustable Delay line	118 ms / 40 m
Frequency response (-10 dB)	50 Hz - 18 kHz
Components	LF-MF 10" Neodymium woofer (2.5" v.c.) HF 1.4" PETP diaphragm driver
Directivity (HxV)	50° to 100° x 55°
Weight	14.6 kg
Finish	Multilayer plywood Optimized front steel grille with foam High resistant bi-component black Polyurea coating

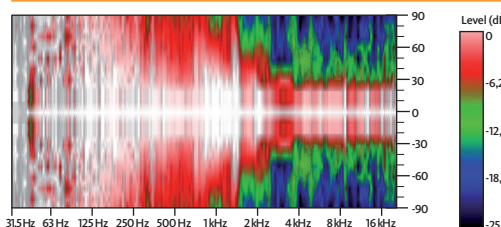
FREQUENCY RESPONSE 1W/1m (FLAT PRESET)



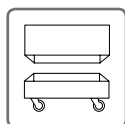
HORIZONTAL COVERAGE, 0°



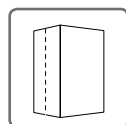
VERTICAL COVERAGE, 0°



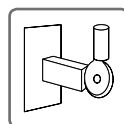
ACCESSORIES



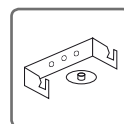
FC-JK10



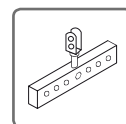
NC-JK10



SP-35



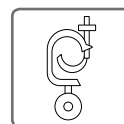
SP-10



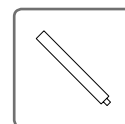
HR-10



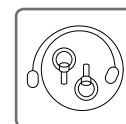
GT-50



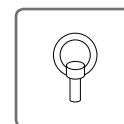
GT-50HR



SP/CR



SC-15



ACR-M8