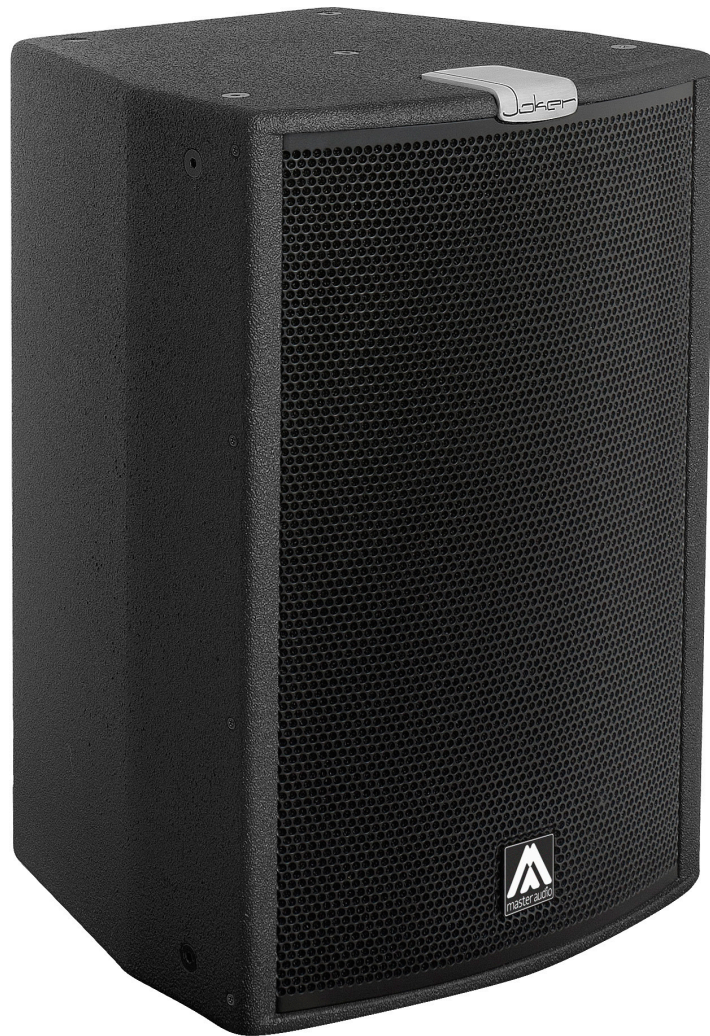


JK10

10" TWO-WAY
SPEAKER SYSTEM

Joker



**Outstanding size to power ratio.
500 W in a reduced 10" format tears down any excuse
to obtain a "big" sound in a reduced size.**

Excepcional relación tamaño-potencia.
500 W en un formato de tan solo 10", ya no hay excusa;
el tamaño no es un impedimento para tener un sonido "a lo grande".

JK10 10" TWO-WAY SPEAKER SYSTEM



Asymmetrical dispersion horn

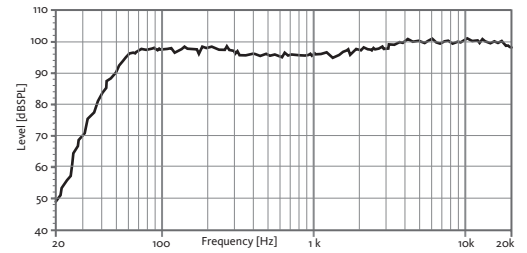


High resistant Polyurea® Paint

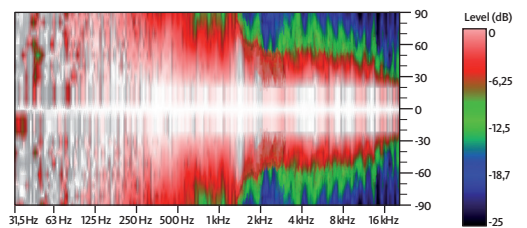
TECHNICAL FEATURES JK10 PASSIVE

Power (musical program)	500 W
Nominal Impedance	8 Ω
SPL (1 m)	97 dB (1 W), 124 dB continuous 127 dB peak
Frequency response (-10 dB)	52 Hz - 18 kHz
Components	LF-MF 10" woofer (2.5" v.c.) HF 1.4" PETP diaphragm driver
Directivity (HxV)	50° to 100° x 55°
Weight	16.3 kg
Finish	Multilayer plywood Optimized front steel grille with foam High resistant bi-component black Polyurea coating

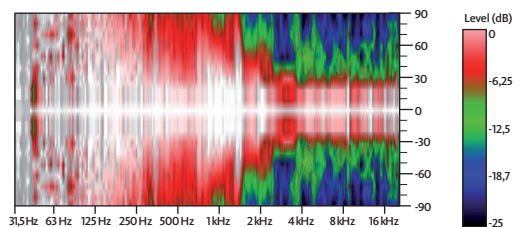
FREQUENCY RESPONSE 1W/1m (FLAT PRESET)



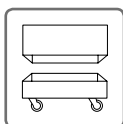
HORIZONTAL COVERAGE, 0°



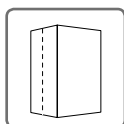
VERTICAL COVERAGE, 0°



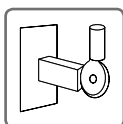
ACCESSORIES



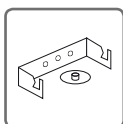
FC-JK10



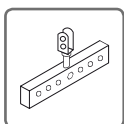
NC-JK10



SP-35



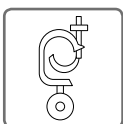
SP-10



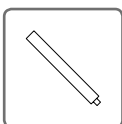
HR-10



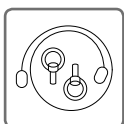
GT-50



GT-50HR



SP/CR



SC-15



ACR-M8